



Barcode Agent, the ideal solution for label designing and printing. It incorporates easy to use feature and flexible design capability to make designing label with ease.

Barcode agent combines barcodes, text and graphics from multiple data sources and print them from printers you are connected to.

It offers enhanced database connectivity for users to obtain data from different database format with ODBC technology and enables you to link directly the data with your design.

The intuitive interface and flexible design capability of Barcode Agent is your tools to a fabulous design.

Barcode browser

-the barcode browser interface loads every object and allows modifications with ease

Toolbox

-Multiple tools in the toolbox allows users to open, save, print and more

Design Mode

-Drag & Drop feature allows user to simply drag and drop items onto workspace and start your creative designing

-Extendable label Design allows user to design up to any size the user's label could support

-Crosshair pointer allows user to visualize the size of label before creation

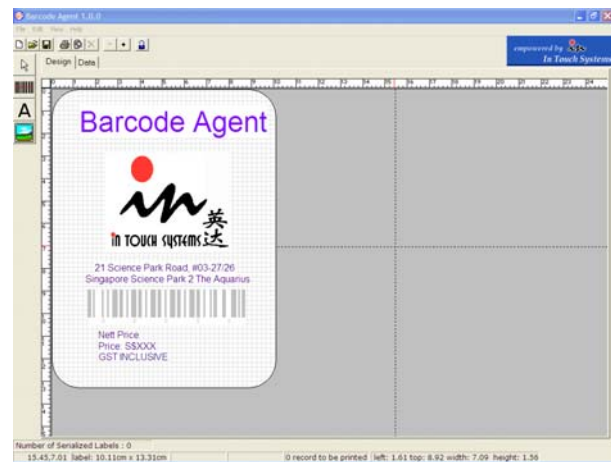
-Measurement ruler allows user to design labels of specific measurements

-Snap and Grid feature allows user to design labels of right alignment

-Text Feature allows user to input alphanumeric text and choose up to 150 fonts and 50 colors

-Graphical Feature allows user to input pictures into the label design

-Barcode Design allows users to create a barcode of any size, font and color



Zoon Feature

-Zoom feature allows user to zoom in or out of the design for a better view

WYSIWYG Feature

-WYSIWYG feature allows user to get the most accurate viewing of your design before printing to make designing work faster

Lock Feature

-Lock feature allows user to lock design in place to prevent design loss or unlock when changes were to be made to the design

Database Connectivity

-Users are able to obtain data from different database formats with ODBC technology

Data Sources

-Various data sources for users to store data in files and share them among label.

1. Screen Data- Displaying data based on user's screen data input

2. Database- Retrieving data from database files

3. Date/Time- Displaying date/time as a value

4. Serialization- Printing out a serial of labels with user indicate starting number and increment.